

RUNWAY END COORDINATES	
Runway	Coordinates
Runway 12	N44° 27' 30.7989" W95° 50' 17.1403"
Runway 30	N44° 26' 45.0549" W95° 49' 0.7847"
Runway 2	N44° 26' 45.7259" W95° 49' 20.9209"
Runway 20	N44° 27' 20.5884" W95° 48' 55.034"

SEE SHEETS B2 AND B3 FOR RUNWAY 12 AND 30 EXTENDED APPROACH ZONE DETAILS



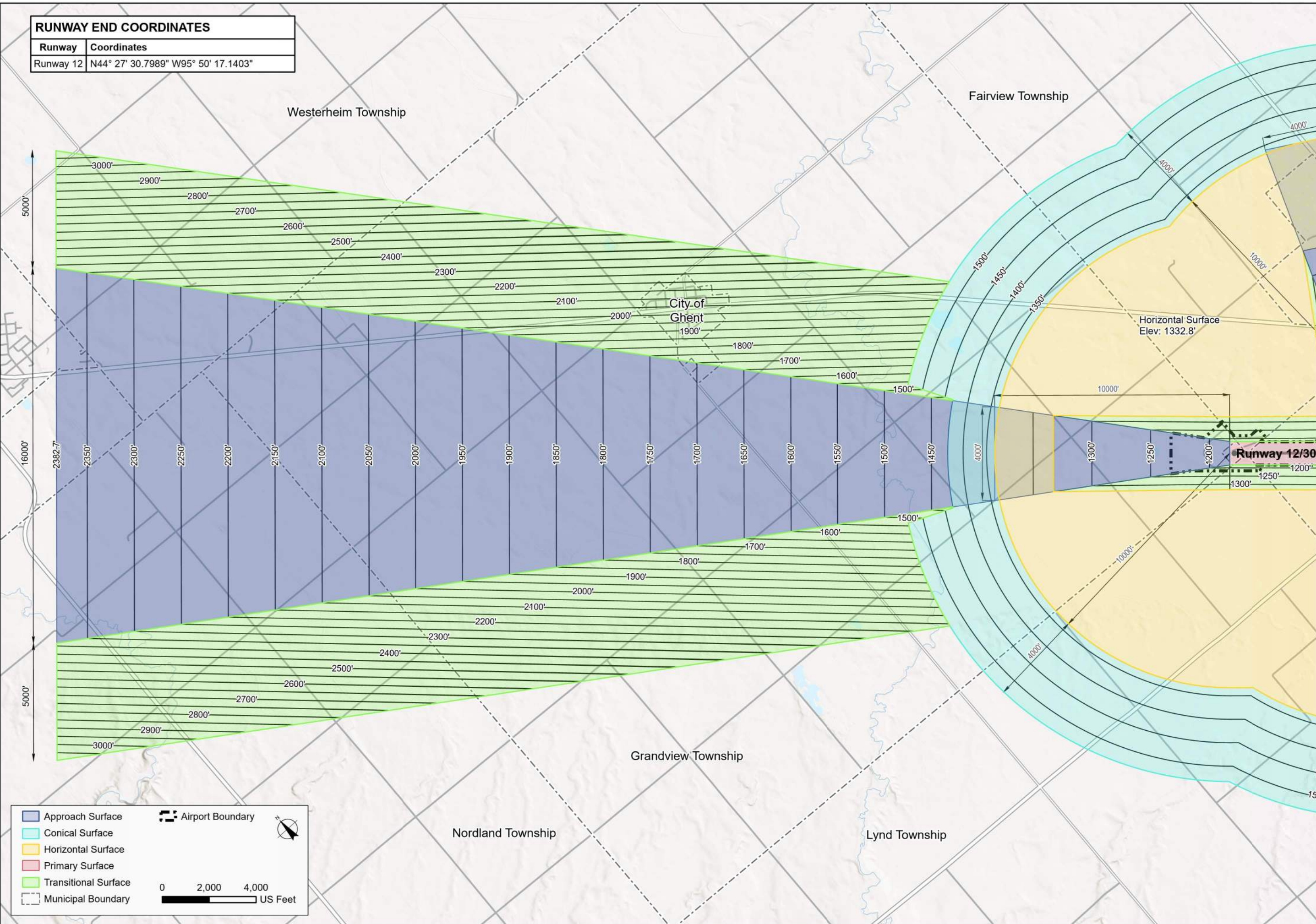
MARSHALL
CULTIVATING THE BEST IN US

B1: AIRSPACE ZONING MAP
Southwest Minnesota Regional Airport - Marshall/Ryan Field

PROJ. NO. 18423
DATE: FEBRUARY 2023

RUNWAY END COORDINATES

Runway	Coordinates
Runway 12	N44° 27' 30.7989" W95° 50' 17.1403"



Approach Surface	Airport Boundary	
Conical Surface	Primary Surface	
Horizontal Surface	Transitional Surface	
Primary Surface	Municipal Boundary	

Engineering
Architecture
Planning
444 Cedar Street
Suite 1500
Saint Paul, MN 55101
651.292.4400
tkda.com

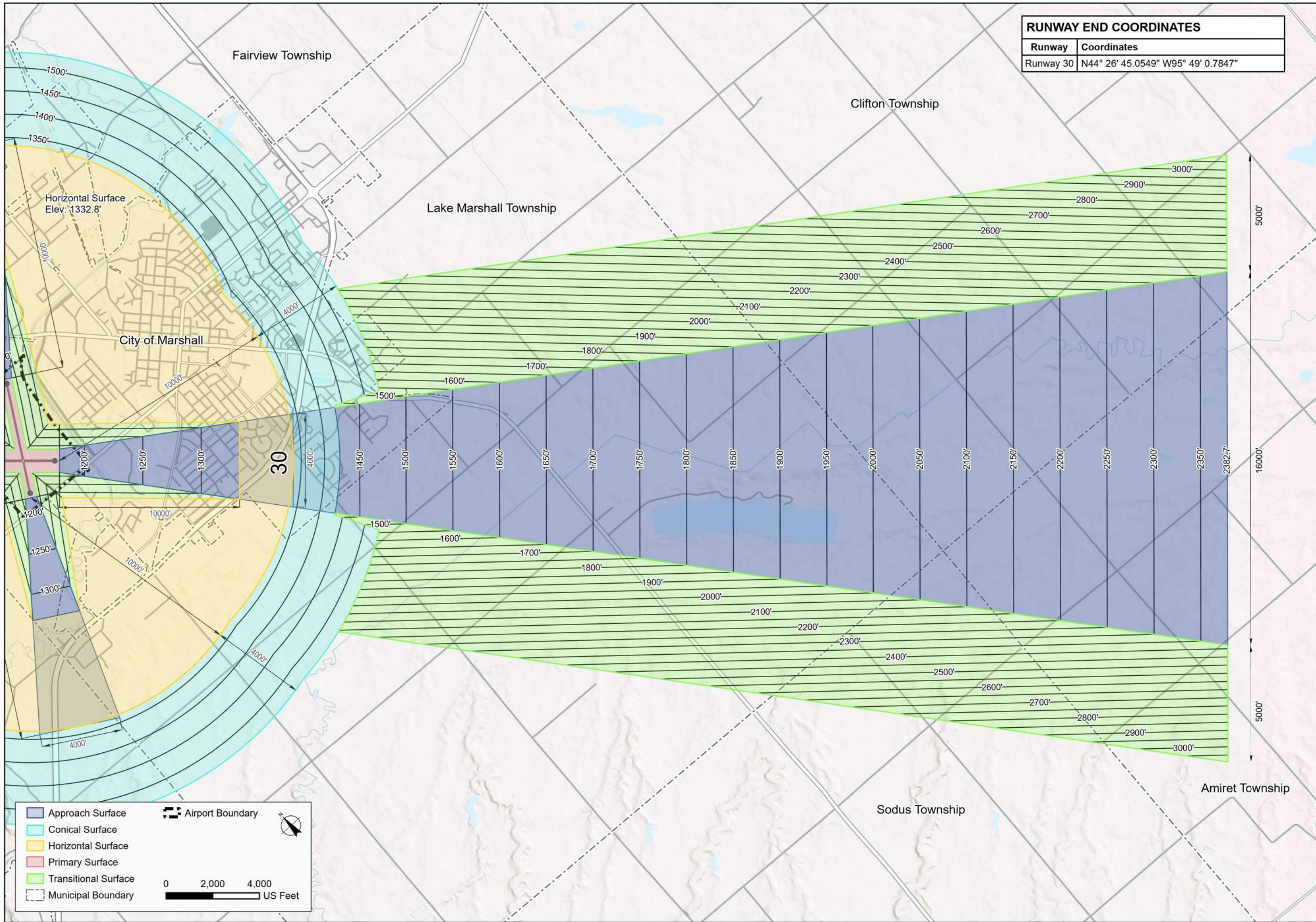
MARSHALL
CULTIVATING THE BEST IN US

B2: Airspace Zoning Map - Runway 12 Extended Approach

Southwest Minnesota Regional Airport - Marshall/Ryan Field

PROJ. NO. 18423

DATE: FEBRUARY 2023



RUNWAY END COORDINATES	
Runway	Coordinates
Runway 30	N44° 26' 45.0549" W95° 49' 0.7847"

Approach Surface	Airport Boundary	
Conical Surface		
Horizontal Surface		
Primary Surface		
Transitional Surface		
Municipal Boundary		

Engineering
Architecture
Planning

444 Cedar Street
Suite 1500
Saint Paul, MN 55101
651.292.4400
tkda.com

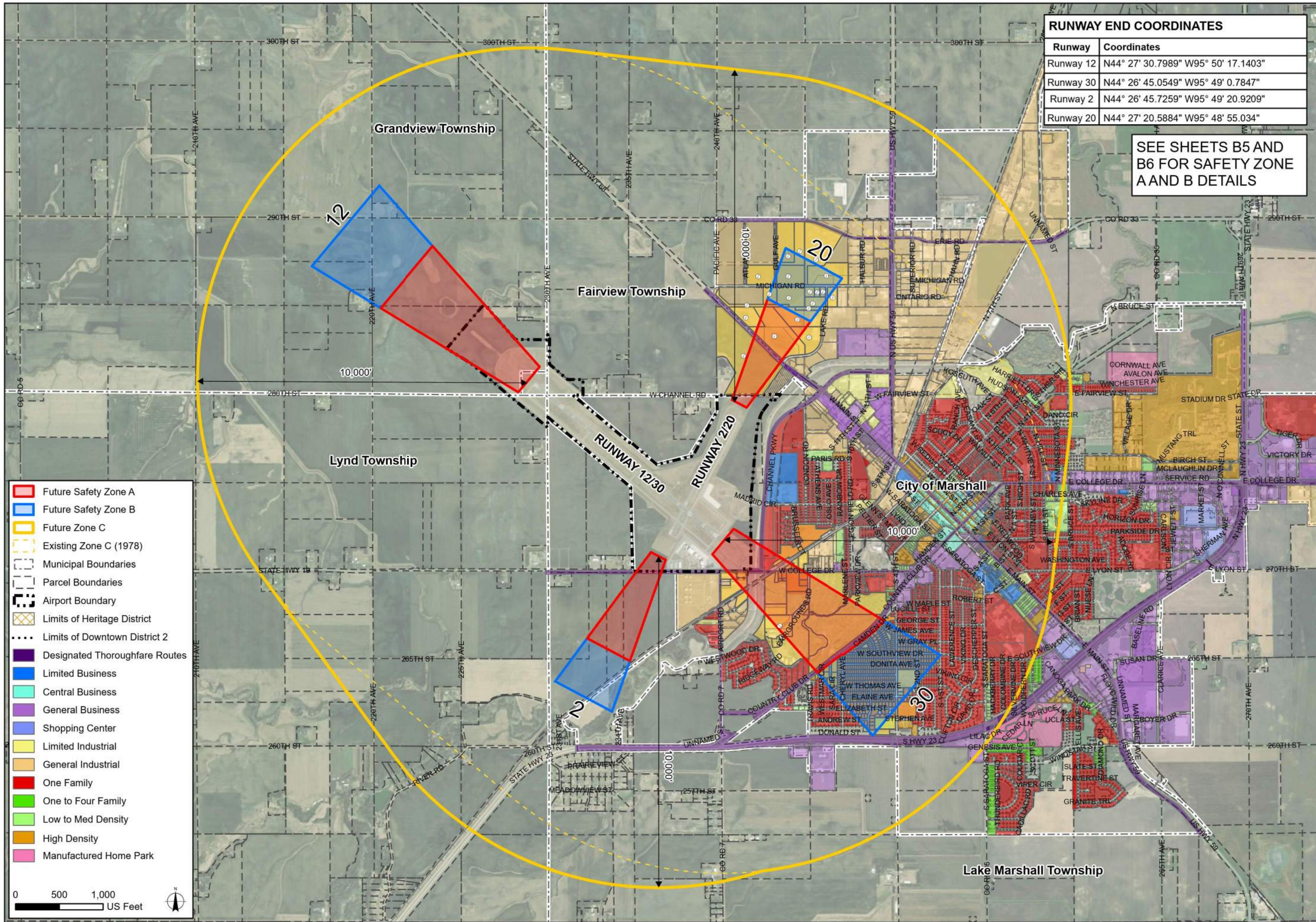
MARSHALL
CULTIVATING THE BEST IN US

B3: Airspace Zoning Map - Runway 12 Extended Approach

Southwest Minnesota Regional Airport - Marshall/Ryan Field

PROJ. NO. 18423

DATE: FEBRUARY 2023



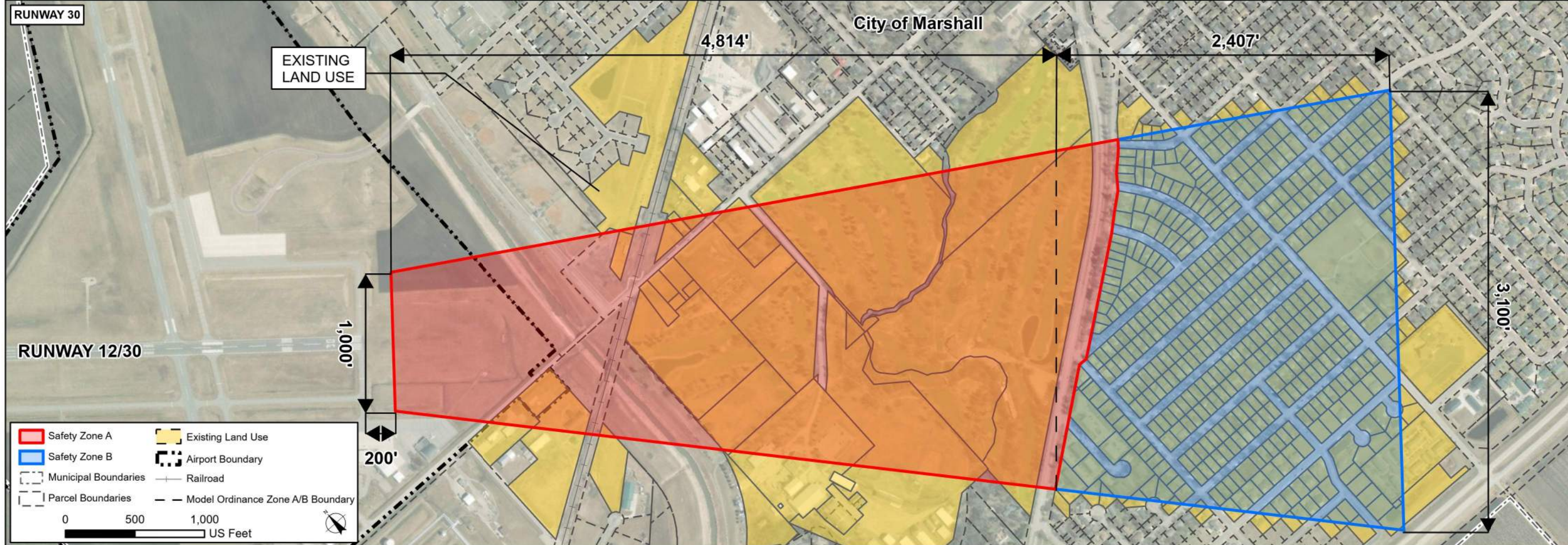
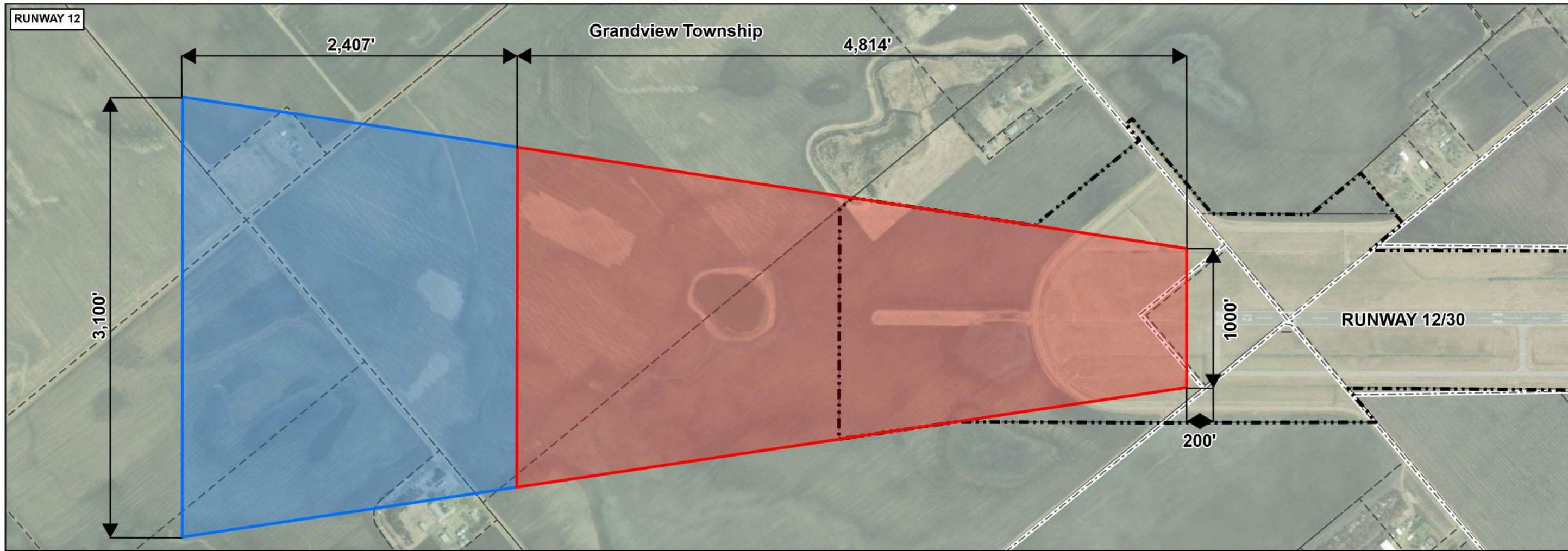
RUNWAY END COORDINATES	
Runway	Coordinates
Runway 12	N44° 27' 30.7989" W95° 50' 17.1403"
Runway 30	N44° 26' 45.0549" W95° 49' 0.7847"
Runway 2	N44° 26' 45.7259" W95° 49' 20.9209"
Runway 20	N44° 27' 20.5884" W95° 48' 55.034"

SEE SHEETS B5 AND B6 FOR SAFETY ZONE A AND B DETAILS

- Future Safety Zone A
- Future Safety Zone B
- Future Zone C
- Existing Zone C (1978)
- Municipal Boundaries
- Parcel Boundaries
- Airport Boundary
- Limits of Heritage District
- Limits of Downtown District 2
- Designated Thoroughfare Routes
- Limited Business
- Central Business
- General Business
- Shopping Center
- Limited Industrial
- General Industrial
- One Family
- One to Four Family
- Low to Med Density
- High Density
- Manufactured Home Park



B4: Land Use & Zoning Map
 Southwest Minnesota Regional Airport - Marshall/Ryan Field
 PROJ. NO. 18423
 DATE: FEBRUARY 2023

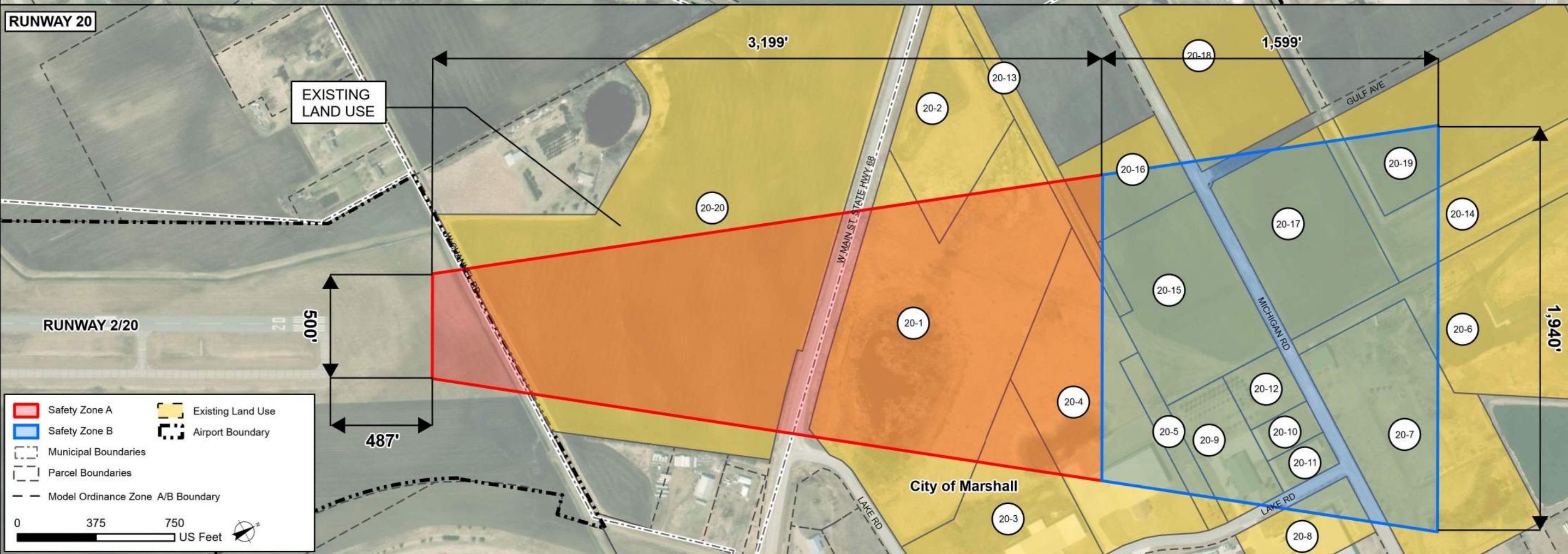
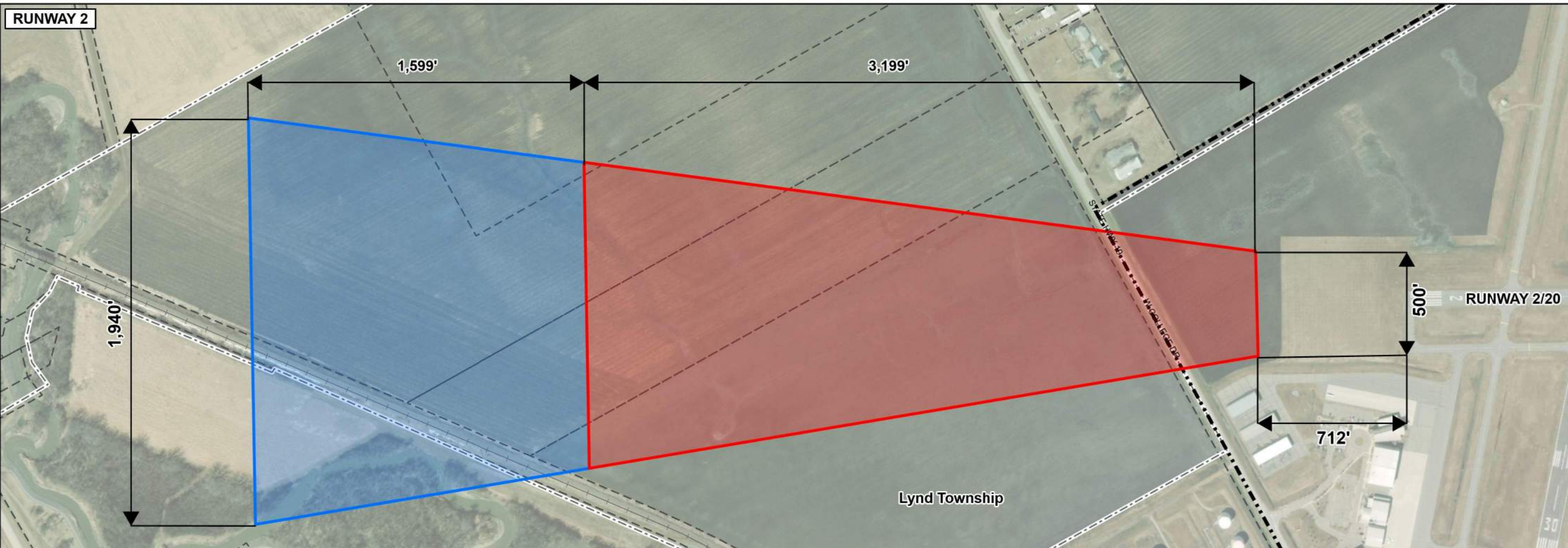


B5: Runway 12/30 Land Use & Zoning Map Detail

Southwest Minnesota Regional Airport - Marshall/Ryan Field

PROJ. NO. 18423

DATE: FEBRUARY 2023



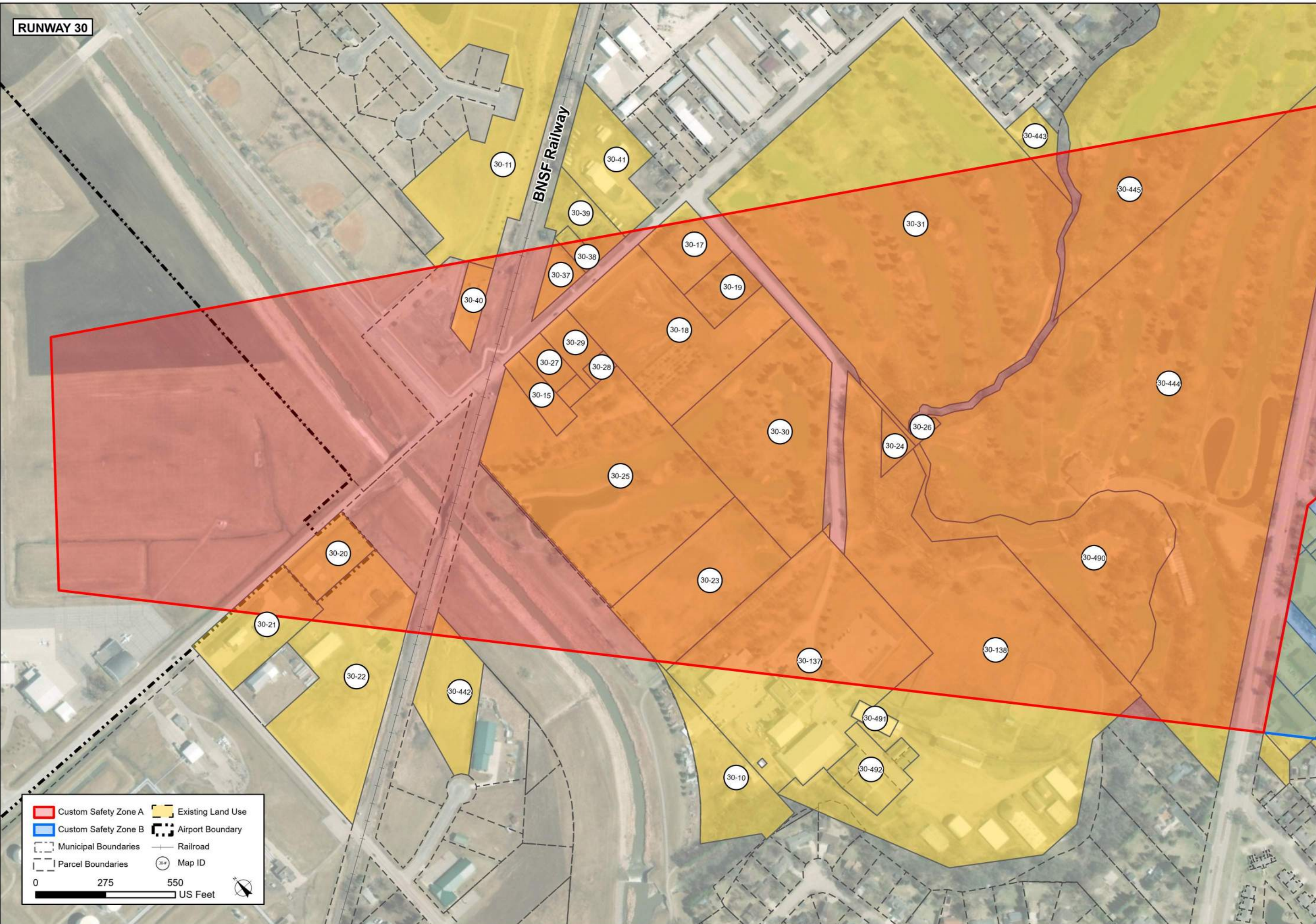
B6: Runway 2/20 Land Use & Zoning Map Detail

Southwest Minnesota Regional Airport - Marshall/Ryan Field

PROJ. NO. 18423

DATE: FEBRUARY 2023





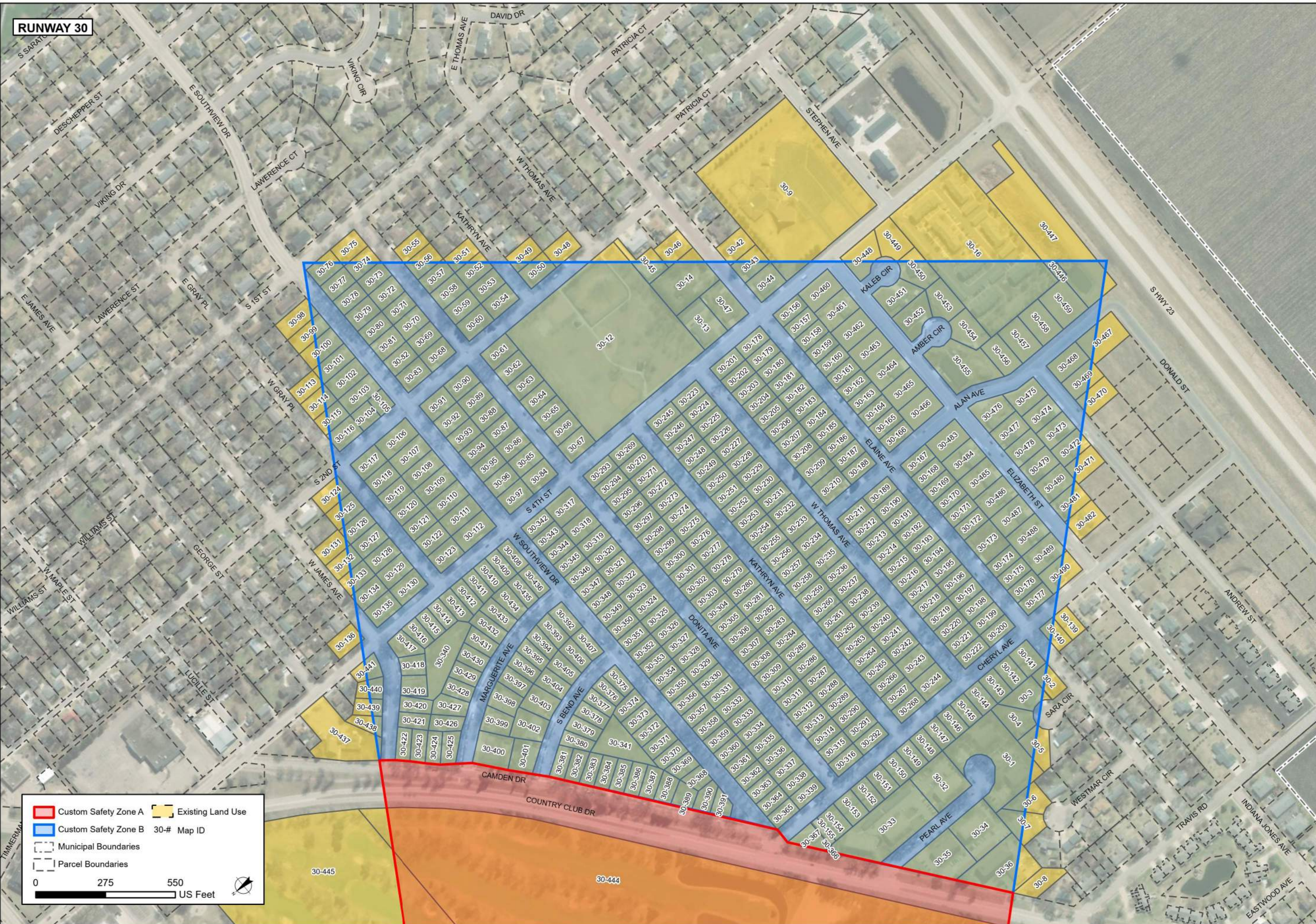
B7: Existing Land Use Details - Runway 30 Custom Safety Zone A

Southwest Minnesota Regional Airport - Marshall/Ryan Field




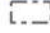

PROJ. NO. 18423

DATE: FEBRUARY 2023






RUNWAY 30

	Custom Safety Zone A		Existing Land Use
	Custom Safety Zone B	30-#	Map ID
	Municipal Boundaries		
	Parcel Boundaries		

0 275 550 US Feet



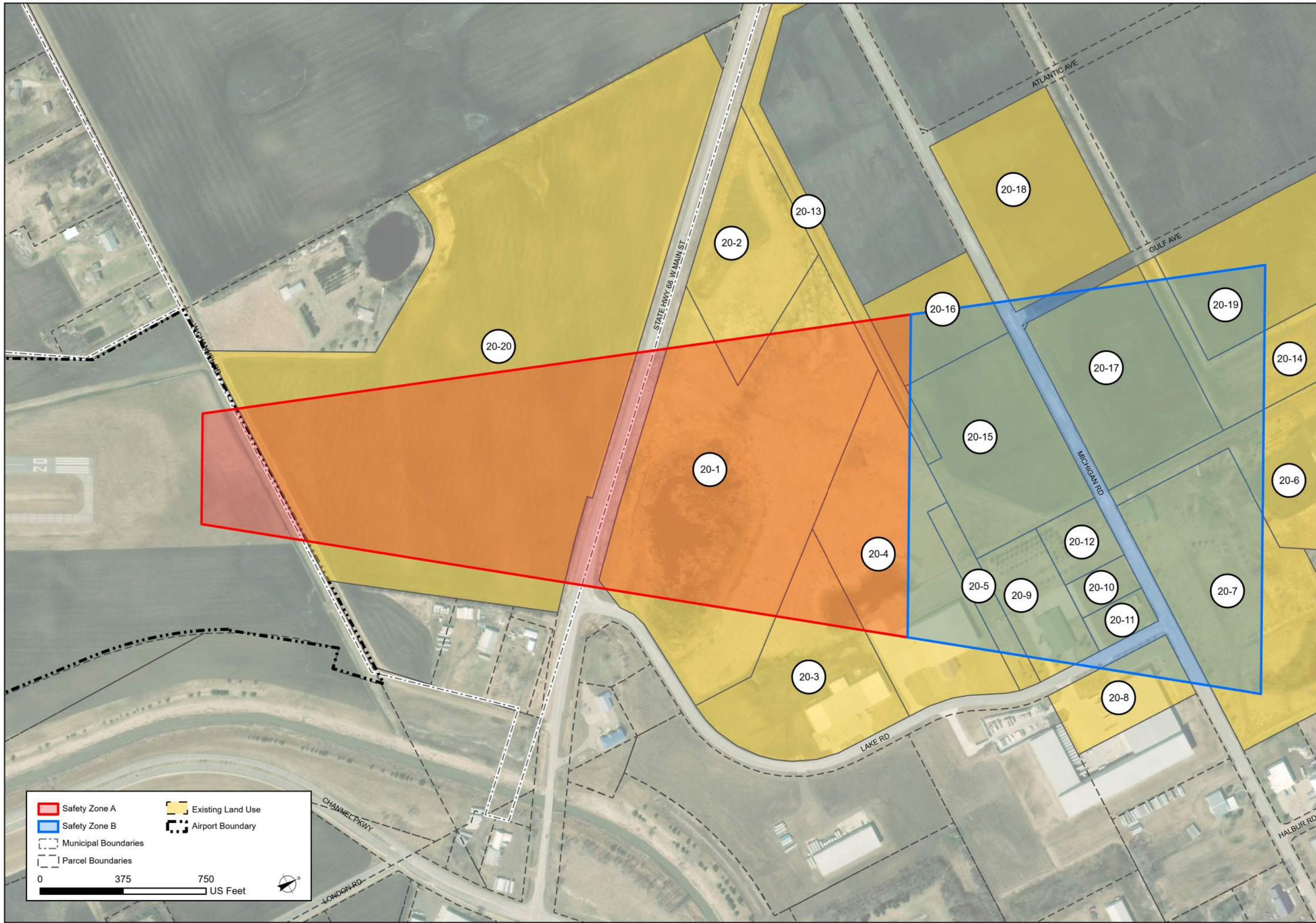
B8: Existing Land Use Details - Runway 30 Custom Safety Zone B

Southwest Minnesota Regional Airport - Marshall/Ryan Field

PROJ. NO. 18423

DATE: FEBRUARY 2023





B9: Existing Land Use Details - Runway 20 Safety Zones A & B

Southwest Minnesota Regional Airport - Marshall/Ryan Field

PROJ. NO. 18423

DATE: FEBRUARY 2023

